

## LOW-ANXIETY TEST

MRI – magnetic resonance imaging – technology is a noninvasive way for a physician to view internal organs and tissue. Here is the GE Signa OpenSpeed, the world's highest strength open MRI system.

**Dimensions:** 15 feet long, 7 feet wide and 8 feet high

**Power:** 0.7 Tesla (unit of radiation)

**Cost of machine:** More than \$1.8 million

Upper magnet

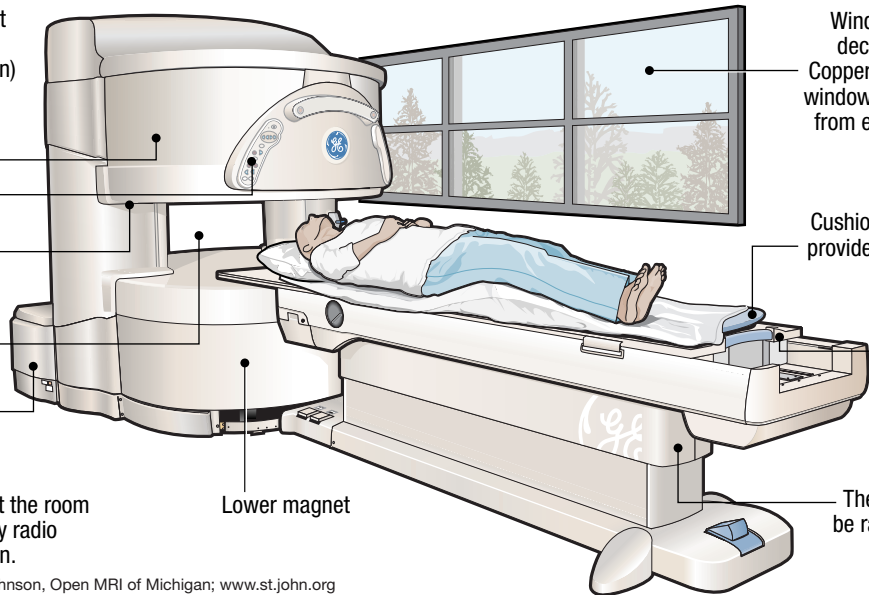
Control panel

Controls under the upper magnet are for lighting, airflow and a call button.

The most intense area of the magnet is its center.

A sitting area is provided for a friend or family member to be with the patient.

Shielding on floor and throughout the room protects against any unnecessary radio waves that might disturb the scan.



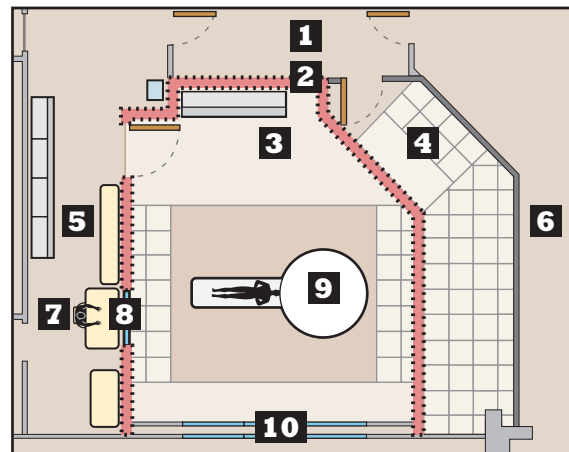
Windows in the MRI room decrease patient anxiety. Copper shielding around the windows blocks radio waves from entering the room and disturbing the scan.

Cushioned pads and pillows provide comfort and support during scanning.

Table moves patient into the center of the magnet.

The table's pedestal can be raised or lowered with controls.

## OPEN MRI OF MICHIGAN SCANNING ROOM



**1** Changing rooms

**2** Radio frequency shield wall

**3** Magnet room

**4** Magnet electronic room

**5** Scanning control room

**6** Reception room

**7** Technologist's desk

**8** Window

**9** MRI scanner

**10** Picture window