

## MEMBERSHIP TYPES

- ☐ **ORANGE & GREEN** - \$140.00  
Includes: National Dues (\$35); Regional Dues (\$5); Local Dues (\$25); Chapter Scholarship Fund (\$50); NAA Scholarship Fund (\$25)
- ☐ **ORANGE** - \$115.00  
Includes: National Dues (\$35); Regional Dues (\$5); Local Dues (\$25); Chapter Scholarship Fund (\$50)
- ☐ **GREEN** - \$90.00  
Includes: National Dues (\$35); Regional Dues (\$5); Local Dues (\$25); Chapter Scholarship Fund (\$25)
- ☐ **VENOM** - \$65.00  
Includes: National Dues (\$35); Regional Dues (\$5); Local Dues (\$25)
- ☐ **LIFETIME** - \$780.00  
Includes: Life Membership Dues (One-time payment of \$750); Regional Dues (\$5); Local Dues (\$25)
- ☐ **SUBSCRIBING LIFETIME** - \$315.00  
Includes: Life Membership Subscription (3 annual payments of \$285); Regional Dues (\$5); Local Dues (\$25)
- ☐ **CURRENT LIFETIME MEMBER** - \$30.00  
Includes: Regional Dues (\$5); Local Dues (\$25); Optional contribution to Chapter Scholarship Fund

**Checks should be made payable to:**  
FAMU National Alumni Association –  
Detroit Metro Chapter  
P.O. BOX 441907  
Detroit, MI 48244-1907

**Online payments are now accepted on the web site.**

For more information, please visit  
[www.detroitrattlers.org](http://www.detroitrattlers.org)  
[detroitrattlers@yahoo.com](mailto:detroitrattlers@yahoo.com)  
313-483-1410 (Rattler Hotline)

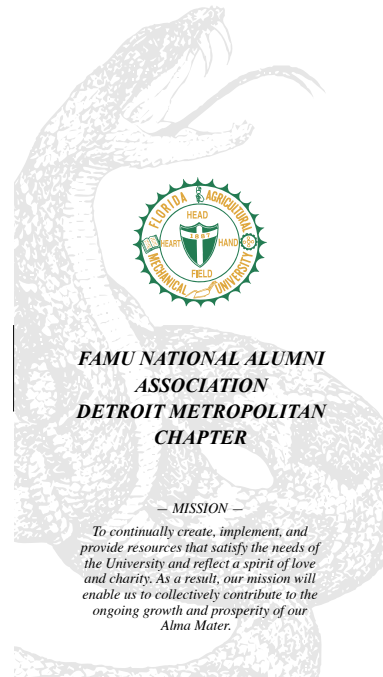


Brochure design by Novia Knight, [novia@designpeddyknight.com](mailto:novia@designpeddyknight.com)  
© 2006, FAMU National Alumni Association - Detroit Metro Chapter

[WWW.DETROITRATTLERS.ORG](http://WWW.DETROITRATTLERS.ORG)

FAMU National Alumni Association  
 Detroit Metro Chapter  
 P.O. BOX 441907  
 Detroit, MI 48244-1907

"Excellence with Caring"



## FAMU NATIONAL ALUMNI ASSOCIATION DETROIT METROPOLITAN CHAPTER

— MISSION —

*To continually create, implement, and provide resources that satisfy the needs of the University and reflect a spirit of love and charity. As a result, our mission will enable us to collectively contribute to the ongoing growth and prosperity of our Alma Mater.*

[WWW.DETROITRATTLERS.ORG](http://WWW.DETROITRATTLERS.ORG)



## Welcome to the FAMU NAA!!

This organization has the distinct task and privilege of supporting the National Alumni Association's mission and upholding the spirit and tradition of our great University.

The alumni body is one of the University's most critical support functions. The long term growth and vitality of our University is dependent upon the love and support of the alumni. It will take the collective effort of each and every one of us to tackle the current and future challenges that our school must face.

Therefore, we invite you to become an active member of the Detroit Metropolitan Area. It is only through your commitment of financial and active participation that the local and national organizations can be successful at supporting the University.

There are many ways that you can participate in the chapter. We have several committees that serve to support our annual objectives and activities. I'm sure that you will find a committee or activity that suits your interest, schedule, and capabilities.

If you have further questions, please feel free to visit our web site at [www.detroitrattlers.org](http://www.detroitrattlers.org) or call the Rattler Hotline at 313-483-1410. We look forward to hearing from you.

Sincerely,

Klassi R. Duncan  
President  
FAMU National Alumni Association  
Detroit Metro Chapter



[WWW.DETROITRATTLERS.ORG](http://WWW.DETROITRATTLERS.ORG)

## OVERVIEW

The Detroit Metropolitan area is home to more than 300 FAMUANS, and the number of students making their journey from the Detroit Metropolitan area to "The Hill" is increasing more and more each year.

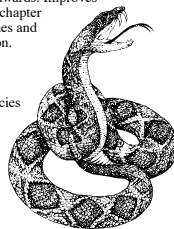
## COMMITTEES

The success of the FAMU NAA Detroit Metro Chapter relies on 6 major committees within the organization:

- 1. Membership**  
Strives to increase financial membership by retaining current members, reclaiming past members and recruiting new members.
- 2. Recruitment**  
Ensures that the organization maintains a visible and viable relationship in the Detroit Metropolitan area schools, so that we are able to create a recruiting/scholarship venue.
- 3. Fund-raising**  
Has the task of strengthening the financial position of the organization in order to support the annual budget.
- 4. Social Programs/Networking**  
Works to expand and strengthen the alumni network in the Detroit Metropolitan area through a number of social and partnership events throughout the year.
- 5. Community Affairs**  
Works to increase community involvement throughout the Detroit Metropolitan area to foster service, leadership and networking.
- 6. Scholarships**  
Manages the disbursement of our annual scholarship awards. Improves and strengthens the chapter scholarship guidelines and process for allocation.

**Other Standing Committees**

- Constitution, Policies and Procedures
- Audit (as appropriate)
- Nominating (as appropriate)



## ANNUAL EVENTS

- Spring
  - Rattler Round-up
  - Motor City Makeover
  - College Fairs (year-round)
- Summer
  - An Evening of Jazz Scholarship Fund-raiser
  - Rattler Weekend
  - Ford Detroit Football Classic
- Fall
  - Rattler Bowl-a-thon Fund-raiser
- Winter
  - Chapter/HBCU Holiday Party

## TOP 10 REASONS TO JOIN FAMU'S DETROIT METRO CHAPTER

10. Strengthen the financial position of the National Alumni Association and the university.
9. Continue and create new friendships with other Rattlers.
8. Network with other organization (HBCUs, NSBE, etc.).
7. Stay connected with and updated with the progress of the university.
6. Help to keep FAMU visible in Detroit area schools.
5. The opportunity to participate in service activities to have a positive affect on the community of Metropolitan Detroit.
4. Contribute to the ongoing growth of FAMU.
3. Show loyalty to your Alma Mater.
2. Access to networking and other opportunities with FAMUANS.
1. Support group – because only a fellow Rattler can understand what it was like to attend FAMU!!!!



Volunteers at the Motor City Makeover